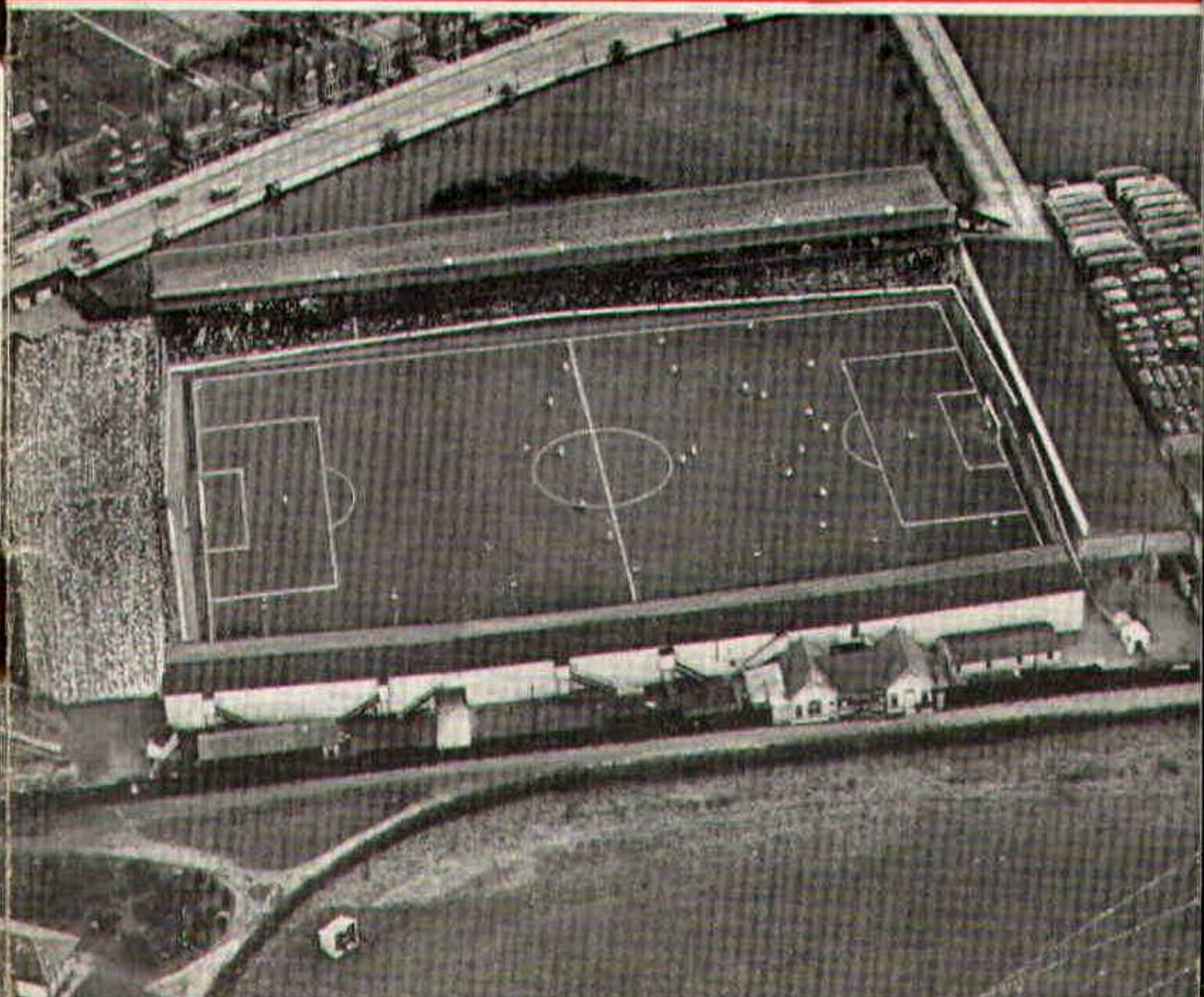


# SWINDON TOWN



## FOOTBALL CLUB

OFFICIAL PROGRAMME 6d.





**FURNITURE AND FURNISHINGS  
OF CHARM AND DISTINCTION**



CARPETS - FLOORCOVERINGS  
LOOSE COVERS - CURTAINS  
SKILLED WORKSHOP REPAIR SERVICE  
AND REMOVALS



Contractors to Government Departments, Hospitals  
and Borough Councils

**MILLS & MERRICKS LTD.**

**16-17 BRIDGE STREET, SWINDON**

**TELEPHONE 5365/6**



**SATURDAY, 1st DECEMBER, 1962**

**DIVISION III**

**SWINDON TOWN**

*v.*

**NOTTS COUNTY**

**Kick-off 3 p.m.**

**REFEREE:**

Mr. A. J. STURGEON (London)

**LINESMEN:**

Red Flag -

Mr. B. T. WICKHAM (Trowbridge)

Yellow Flag -

Mr. E. W. DENHAM (Sutton Coldfield)



for fine printing  
you should have  
a fine printer

**BOROUGH PRESS (SWINDON) LTD**

## **Maylott Studios**

For **GROUP & SPORT** Photographs

Official Photographer to  
Swindon Town Football Club

**31 FARINGDON ROAD**

TEL. 22792

## **NOTTON'S CAFE**

**COUNTY ROAD**

200 yards from Ground

**RIGHT ON THE BALL**

## **C. DUNN & SON**

**BUILDERS & DECORATORS**

**Alterations, Renovations, Conversions**

**Plumbers & Sanitary Engineers**

**503 CRICKLADE ROAD**

TEL. 22522

## **LEESE, ING & Co. Ltd.**

Mineral Water and  
Squash Manufacturers

**Lansdown Rd., Swindon**

Telephone 22744

"COALI"  
"COALI"  
"COALI"

## **J. WILMER**

**ST. MARGARET'S ROAD  
SWINDON**

Telephone 22535

## **L. Wollen**

OFF LICENCE

**WINES and SPIRITS**

Arkell's Ales and Stout

**373 Cricklade Rd., Swindon**  
Deliveries Daily Phone 3508



# SWINDON TOWN FOOTBALL COMPANY LIMITED

Registered Office: COUNTY GROUND, SWINDON.

## Directors:

Mr. W. J. CASTLE (Chairman)	Mr. H. E. LANE (Vice-Chairman)
Mr. B. T. HAMILTON (Hon. Treasurer)	Messrs. C. CHANDLER, J.P., J. DAVIES,
R. FRICKER, C. J. GREEN, F. PLYER, H. WILLIAMS and K. H. WILMER	
Manager: B. J. HEAD	Secretary: R. A. MORSE

---

**VOL. 13**

**SATURDAY, DECEMBER 1st, 1962**

**No. 13**

---

## CLUB NOTES

We often disagree with press reports, but rarely comment on the fact.

On this occasion we feel the national press, and even the television commentators, were very generous in their praise of our play at Yeovil. We certainly must not look a gift horse in the mouth, but we are sure all our supporters will agree with us when we say that our team has played much better than on Saturday last. The final result from our point of view was excellent, and we are still in the F.A. Cup, although the draw for the 3rd Round is not what most of us had hoped.

Nevertheless, our team did not get into its stride or rhythm, and certainly did not play the football of which we know it is capable. Many will remember the game as one which "never started". Although the crowd encroached almost to the touch-line, the atmosphere and excitement of a "cup-tie" seemed to be missing.



# **WILSONS (SWINDON) LTD.**

**BUILDERS OF MODERN ATTRACTIVE  
HOUSES AND BUNGALOWS**

Enquiries to:

**Head Office:** 90 COMMERCIAL ROAD, SWINDON 6361

**Site Office:** COVENTRY FARM ESTATE, WROUGHTON 271

**Site Office:** QUEENSFIELD ESTATE, STRATTON S.M. 3405

---

**The Rendezvous of all Sportsmen -**

## **THE CROWN INN**

(Host: Frank Plyer)

**Arkell's Best Ales : Fully Licensed**

**Snacks, etc.**

**Stratton St. Margaret Tel. 2339**

Always at your service

## **L. BIBBY**

**For all Types, Rags, Iron and Metal,  
etc. Spot Cash Paid. Please Tel.  
2101 and our van will call.**

**THE PADDOCK, ERMIN STREET  
STRATTON ST. MARGARET**

---

**FISH**

**POTATOES**

**T. QUALITY (Swindon)  
LTD.**

**Wholesale Merchants**

**COLLEGE STREET**

**TEL. 5446/7**

**For Best Quality Wet Fish  
9 a.m. - 6 p.m. (except Mondays)**

## **YORK ROAD FISHERIES**

**Frying Mid-day Tuesday, Thursday,  
Friday and Saturday**

**Phone 3680**

---

# **MARSHGATE GARAGE**

**MOTOR ENGINEERS :: ROOTES GROUP DEALERS**

**STRATTON ROAD - SWINDON - WILTS.**

**Tel. Swindon 22788**

**TWO MINUTES FROM GROUND**



## CLUB NOTES - continued

Whether it was the occasion, the nearness of the crowd, the uneven surface, the slope or the "holding down" of the ground, to many of us our lads seemed slow, lethargic, with many passes going astray. Yet with all, we hit the bar, post, and almost scored early in the match.

Our lads certainly were cool and poised; they took the game calmly, without once being ruffled or disturbed. They certainly played well within themselves.

We would like to pay tribute to the referee — Mr. Holland of Barnsley. His handling of the game was superb, and it was due to this that nothing untoward occurred, as so often happens in the cup-tie excitement and nerves. Really first class refereeing!

Unfortunately our Chiarmen, Mr. Castle, had to miss the game due to the illness of his wife. We sincerely hope she will soon recover and, with her husband, grace our matches with their presence.

The cup-tie at Luton will not be "all ticket". The total accommodation is 30,000. Unfortunately, our allocation of stand tickets is very small. A limited number of tickets at 7/6d. will be available and these will be allocated to season ticket holders on a one per person basis as far as the number will allow.

The collection at half-time today will be taken by members of the Loyal Order of the Moose, on behalf of their Christmas Appeal. The receipts will be used to assist the old and needy, so please give generously. Thank you!



# **PANKHURST**

**The Palace - Gorse Hill - Swindon**

**MOTOR CYCLE - SCOOTER AND  
THREE-WHEELER SPECIALISTS**

Open Mon. to Sat. 9 a.m. - 8 p.m.

Phone 5466

---

**Their kit is supplied by**

**SWINDON SPORTS CENTRE**

**WHO HAVE THE BEST SELECTION**

**Tel. 4270**

**114 COMMERCIAL ROAD**

---

**IVOR MESSENGER & SONS**

**High-Class Family Butchers**

**QUALITY WITH ECONOMY :: FAIREST PRICES IN TOWN**

**1 COLLEGE STREET, SWINDON**

**Tel. 5647**

---

**£10 TYPEWRITERS from £10**

**FULLY GUARANTEED**

**Also full selection new standard and portable typewriters  
OFFICE EQUIPMENT**

**DOBELL SHEARMAN  
& Co. Ltd.**

**26 High Street & 33 Faringdon Road, Swindon.**

**Tel. 4961/2**





# *At the FINAL WHISTLE*

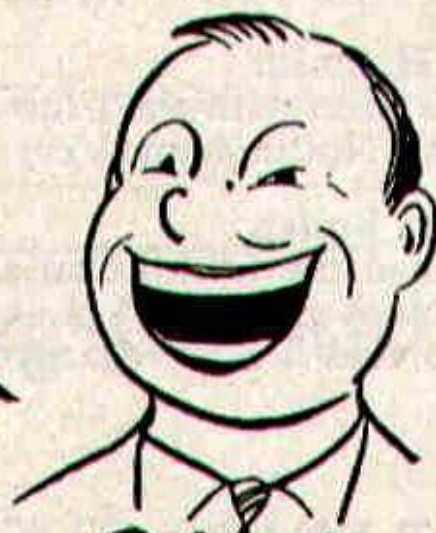
WHETHER YOU FEEL



*Sad*



*Mad* or *Glad*



PLEASE  
DO NOT CROSS THE  
PLAYING PITCH



## OUR VISITORS

We welcome the Officials and Players of Notts County Football Club to the County Ground for this afternoon's Division III game. The teams have already met once this season at Nottingham in the Football League Cup Competition, when we suffered a 5-0 defeat. Nevertheless, we are hoping we can repeat last season's result at Swindon, when we won 1-0. Our scorer on that occasion was Summerbee.

Pen pictures of the Notts County players from whom today's team will be selected are as follows:—

### GOALKEEPERS

**G. H. Smith.**

Has been with the Club since 1953, having joined direct from school. Born Nottingham. Very safe and reliable 'keeper.

**P. L. Butler.**

Joined the Club as an amateur in 1958, turned professional in 1960. Showed great courage and determination to defy serious injury 3 years ago, and is now regarded as a great prospect.

### FULL BACKS

**R. T. Edwards.**

Joined the Club as an amateur in 1959, and turned professional a few months later. Very tall, positions well, and is now first choice for his position. Can also operate at centre half.

**T. Bircumshaw.**

Joined the Club direct from school in 1960. Turned professional on his seventeenth birthday in February 1962. An excellent prospect who tackles very hard and uses the ball with a great deal of accuracy.

**I. K. Hampton.**

Joined the Club in 1960 after a spell as an amateur with Rotherham United. After a somewhat indifferent start, he has now developed into a very promising full back.



For Quality FLOWERS - FRUIT - VEGETABLES  
also FROZEN FOODS

## **CLARKE'S of Old Swindon**

Proprietors: A. G. G. and J. A. W. HUNT

64 DEVIZES ROAD - SWINDON

Phone 22337

ORDERS DELIVERED

---

## **SEA VIEW CAMP**

Camp Road, Wyke Regis, Weymouth. Tel 3351

Site overlooks Chesil Beach - Ideal for Camping Parties

Also Modern Caravans for Hire

---

## **Swindon Bacon Curing Co. Ltd.**

Specialists in

BACON - PORK - COOKED HAM

50 FLEET STREET, SWINDON

Telephone 22122

---

Meet your friends for an enjoyable evening at

## **THE KINGSDOWN INN**

(Host A. W. Vann)

FULLY LICENSED - ARKELL'S BEERS

SNACKS - Etc.

STRATTON ST. MARGARET

Tel. 3283



## **OUR VISITORS - continued**

### **D. Agnew.**

Secured from Scunthorpe United June 1962. Well-built player. Can play either flank. Previous service with Leicester City.

## **WING HALVES**

### **J. Sheridan.**

Joined the Club in 1955 from a local junior side. A fine attacking player who operates equally well in a defensive role.

### **G. F. Carver.**

Joined the Club in 1952. Club Captain. An excellent ball player who has performed very consistently over the years since his debut. He has always been regarded as first team material.

### **R. M. Woodford.**

Joined the Club in 1960 as an amateur and turned professional one year later. A fine prospect who should continue to improve with experience. Uses the ball extremely well. Part-time player.

### **R. B. Daykin.**

Secured from Derby County July 1962. Spent seven seasons there. Is quite a useful player, equally at home in defence and attack.

## **CENTRE HALVES**

### **A. P. S. Gibson.**

Joined the Club in 1959 from Auchinleck Talbot. A fine stopper type of pivot who never knows when he is beaten.

### **H. Loxley.**

Joined the Club in 1952, and is longest serving player. A tall, commanding pivot who is extremely good in the air. Was formerly a wing half.



## OUR VISITORS – continued

### FORWARDS

#### **K. F. Fry (Outside-Right).**

Joined the Club Feb. 1962 from Newport County. A fast-raiding winger with good shot. Welsh Schoolboy International.

#### **B. Moore (Outside-Right).**

Joined the Club in 1961 after previous amateur service with Mansfield Town and Leeds Utd. A fast winger with terrific shot.

#### **J. Astle (Inside-Forward).**

Joined the Club direct from school in 1958. Turned professional one year later. A promising inside forward and useful goalscorer.

#### **A. J. Flower (Inside-Forward or Winger).**

Joined the Club in 1960 direct from school, and turned professional one year later. Local youngster who shows promise.

#### **A. Withers (Outside-Left).**

Joined the Club from Lincoln City in Jan. 1959, after previous service with Blackpool. Born Nottingham. Clever ball player and can also play at inside forward.

#### **R. Brown (Inside-Forward).**

Joined the Club May 1962 from Aston Villa, for whom he scored 32 goals in the reserve team last season. Very fast and possesses good shot. Had the distinction of appearing for Aston Villa in the first Football League Cup Final in 1961.

#### **B. Jones (Centre-Forward).**

Joined the Club March 1961 as an amateur, and turned professional October same year after demob. from H.M. Forces. Holds the Club record of having scored the quickest goal from kick-off in 6 secs. Fierce shot and exceptionally fast off the mark.

#### **T. Hateley (Centre-Forward).**

Joined the Club in 1957 direct from school. One of the finest headers of a ball in the game today. Very dangerous leader whose services have been sought by many clubs.



# **B. J. MARTIN & SONS LTD.**

*Butcher*

10 HIGH STREET  
MARLBOROUGH  
Phone 212

126 VICTORIA ROAD  
SWINDON  
Phone 4860

## **CLARK BROS. (SWINDON) LTD.**

**BUILDING AND CIVIL ENGINEERING  
CONTRACTORS  
SWINDON**

Telephone: Swindon 3417/8/9

Do not let **CHILBLAINS** spoil a good game

**RELAPERNE**

Price 2/6 from your CHEMIST

2/10 Post Paid from

**Ballard & Co. (Chemists) Ltd., Faringdon, Berks.**



# DIVISION III LEAGUE TABLE

		P	W	D	L	F	A	Pts.
Peterborough United	...	21	11	5	5	51	34	27
Northampton Town	...	20	10	6	4	49	27	26
Watford ...	...	21	12	1	8	49	38	25
Bournemouth ...	...	21	8	9	4	28	22	25
Notts County ...	...	20	10	5	5	29	29	25
Queens Park Rangers	...	19	11	2	6	46	26	24
<b>Swindon Town</b> ...	...	<b>20</b>	<b>8</b>	<b>7</b>	<b>5</b>	<b>41</b>	<b>27</b>	<b>23</b>
Coventry City ...	...	20	8	7	5	37	32	23
Port Vale ...	...	21	8	6	7	25	23	22
Southend United ...	...	20	11	0	9	36	40	22
Shrewsbury Town	...	21	7	7	7	50	42	21
Barnsley ...	...	21	9	3	9	33	30	21
Wrexham ...	...	20	10	1	9	40	42	21
Colchester United	...	21	7	7	7	36	41	21
Bristol City ...	...	20	7	6	7	43	40	20
Hull City ...	...	19	7	5	7	33	33	19
Reading ...	...	21	8	2	11	35	36	18
Bristol Rovers ...	...	22	7	4	11	33	47	18
Millwall ...	...	20	4	9	7	40	44	17
Bradford ...	...	20	5	6	9	26	40	16
Halifax Town ...	...	21	5	6	10	27	45	16
Brighton & H. A. ...	...	21	4	6	11	24	43	14
Carlisle United ...	...	18	3	6	9	20	35	12
Crystal Palace ...	...	20	2	8	10	18	33	12



## DIVISION III FIXTURE LIST

Date	Opponents	Ground	Result
August 18	BARNSELY .....	(A)	1-1
21	COVENTRY CITY .....	(H)	4-1
25	NORTHAMPTON TOWN .....	(H)	2-3
28	COVENTRY CITY .....	(A)	0-2
September 1	QUEEN'S PARK RANGERS .....	(A)	2-2
4	BRIGHTON and HOVE ALBION .....	(A)	1-1
8	HULL CITY .....	(H)	2-0
11	BRIGHTON and HOVE ALBION .....	(H)	5-1
15	CRYSTAL PALACE .....	(A)	0-0
18	CARLISLE UNITED .....	(A)	0-0
22	WREXHAM .....	(H)	3-0
25	DARLINGTON (Cup) .....	(H)	4-0
29	HALIFAX TOWN .....	(A)	3-4
October 2	BRISTOL ROVERS .....	(H)	3-0
6	WATFORD .....	(H)	3-1
9	BRISTOL ROVERS .....	(A)	0-2
13	BRISTOL CITY .....	(A)	2-2
20	READING .....	(H)	1-1
27	PORT VALE .....	(A)	1-2
November 3	(1) READING .....	(H)	4-2
10	MILLWALL .....	(A)	4-3
17	SOUTHEND UNITED .....	(H)	4-1
24	(2) YEOVIL .....	(A)	2-0
December 1	NOTTS COUNTY .....	(H)	.....
8	BOURNEMOUTH and B.A. .....	(A)	.....
15	BARNSELY .....	(H)	.....
22	NORTHAMPTON TOWN .....	(A)	.....
26	BRADFORD .....	(A)	.....
29	BRADFORD .....	(H)	.....

### 1963

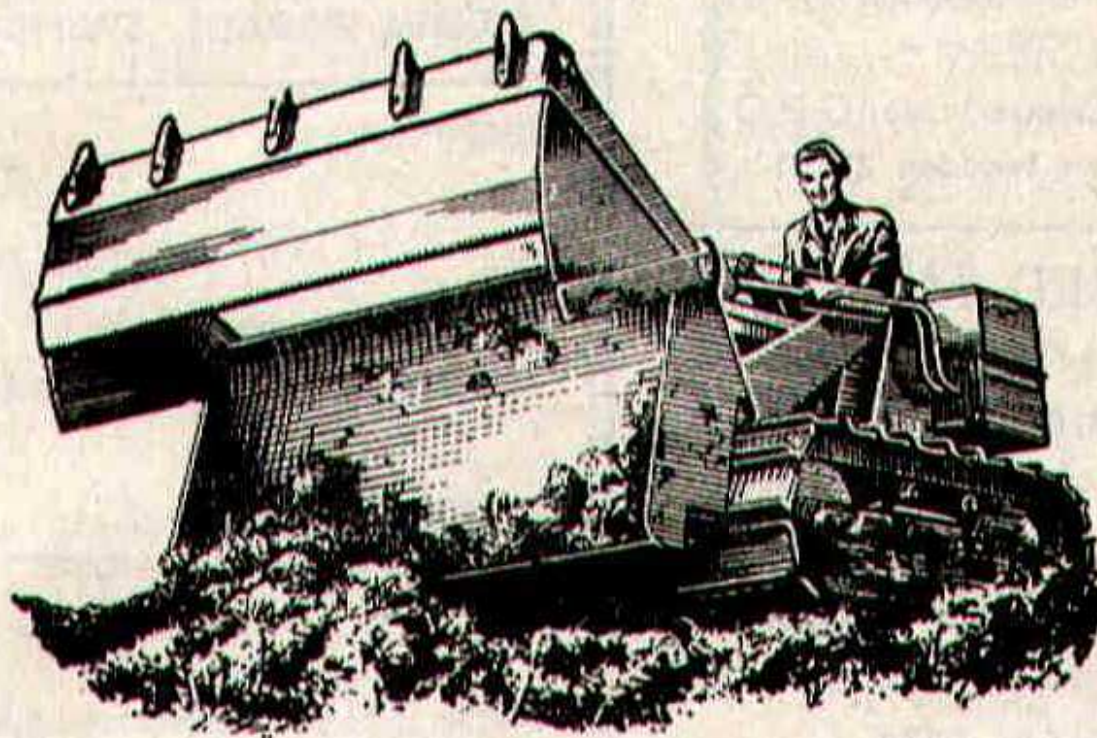
January 5	(3) LUTON TOWN .....	(A)	.....
12	QUEEN'S PARK RANGERS .....	(H)	.....
19	HULL CITY .....	(A)	.....
26	(4) SHREWSBURY TOWN .....	(H)	.....
February 2	CRYSTAL PALACE .....	(H)	.....
9	WREXHAM .....	(A)	.....
16	(5) HALIFAX TOWN .....	(H)	.....
23	WATFORD .....	(A)	.....
March 2	BRISTOL CITY .....	(H)	.....
8	(6) READING .....	(A)	.....
16	PORT VALE .....	(H)	.....
23	SHREWSBURY TOWN .....	(A)	.....
30	(S.F.) MILLWALL .....	(H)	.....
April 6	SOUTHEND UNITED .....	(A)	.....
12	PETERBOROUGH UNITED .....	(H)	.....
13	COLCHESTER UNITED .....	(H)	.....
15	PETERBOROUGH UNITED .....	(A)	.....
20	NOTTS COUNTY .....	(A)	.....
27	BOURNEMOUTH and B.A. .....	(H)	.....
May 4	(FINAL)		



# H. HIBBERD LIMITED

40 NEWPORT STREET - SWINDON

PLANT HIRE



TRACTORS and SCRAPERS

BULLDOZERS

DROTT SHOVELS

J.C.B. and DINKUM DIGGERS

ROAD ROLLERS

TELEPHONE: SWINDON 6125



## Hatton's Newsagency

A. J. D. Woodhouse and A. Smith

**Newsagents :: Tobacconists  
Confectioners**

Agents for Wessex School of  
Motoring

Main Booking Agents for Millers  
Coaches

**6 Regent Circus (near G.P.O.)**

Telephone Swindon 22731

## HULFORD MOTORS Ltd.

### SELF DRIVE HIRE

Fleet of 1962 Fords  
Populars - Anglias - Consuls

### SHRIVENHAM ROAD

(200 yards from Football Ground)

Phone 4934

Large Car Park available

For High Class  
Central Heating, Plumbing  
Painting and Decorating  
Electrical Installations  
and Repairs

## NORTH WILTS Sanitary & Heating Co. Ltd

**NEWPORT ST., SWINDON**

Phone 5373/4

## WARNES (Swindon)

Electrical Contractors - Radio

Contractors to SWINDON TOWN

**160 COUNTY ROAD, SWINDON**

**9 SWINDON STREET, HIGHWORTH**

**7 CLIVE PARADE, SWINDON**

RIGHT WING

SWINDON

Turner

Wollen (2)

Morgan (4)

McPherson (5)

Summerbee (7)

Hunt (8)

Smith (9)

Swindon Colours:  
RED SHIRTS, WHITE SHORTS

**FOOTBALL  
PINK**

Astle (11)

Edwards (10)

Jones (9)

Carver (6)

Gibson (5)

Bircumshaw (3)

Smith

LEFT WING

NOTTS COUNTY

## WARNES T.V.

TO BE SURE

**51 Commercial Road - Swindon**

and Branches



# S (Swindon) LTD.

actors - Radio and Television

SWINDON TOWN FOOTBALL CLUB

SWINDON  
WORTH  
N

PHONE 6346/7

PHONE 379

PHONE 6346/7

SWINDON

LEFT WING

Turner

Trollope (3)

McPherson (5)

Woodruff (6)

Smith (9)

Jackson (10)

Rogers (11)

FOOTBALL  
PINK

These teams are subject  
to alteration

Jones (9)

Sheridan (8)

Moore (7)

Gibson (5)

Loxley (4)

(3)

Hampton (2)

Smith

NOTTS COUNTY

RIGHT WING

# S T.V. RENTALS

TO BE SURE

oad - Swindon - Phone 6486

and Branches

# McILROYS

## RESTAURANT

for morning coffee,  
luncheon and  
afternoon tea - in  
pleasant surroundings -  
you will find McIlroys  
are top of the  
'league'.

Full table service, best Beers  
and Wines. Parties and  
Functions catered for.

## McIlroys Restaurant

64-72 Regent Street

Tel. 5294



## COATE GARAGE

REPAIRS - OVERHAULS - WELDING  
SERVICING - REBORING - TYRES

Props. E. V. & W. H. Mattick

Marlborough Rd., Swindon



## SUPPORTERS' CLUB NOTES

The announcement of the draw for the Third Round of the F.A. Cup no doubt revived many memories in the minds of older supporters.

Luton Town were Swindon's first opponents on the County Ground on the formation of Division III of the Football League. The result? — Swindon 9, Luton 1.

Luton Town have twice brought to an end successful Cup runs of Swindon Town. In 1937/8, following the Town's famous win over Grimsby Town, it was Luton who put an end to our hopes for the season.

Again in 1951/2, following a victory at Stoke, Swindon hoped to make Cup history, only to fall at Luton once more.

The only other occasion on which the teams appear to have met in the F.A. Cup was in 1931/2 at the County Ground, but it is better to draw a veil over our memories of that game — Swindon 0, Luton 5.

All will agree that Swindon's turn is overdue, but none would wish to sacrifice our chances in the League for a Cup run, and, if a choice could be made, no doubt the majority of supporters would prefer the former.

Today we welcome very old friends from Nottingham. The County supporters have, for a long time, been among our favourite visitors. Their team has been unduly fortunate at the Swindon ground for a number of seasons, but they always return home smiling, with a promise to return the following season.

We have heard that Nottingham girls are the prettiest in the country — yet our Committee has never organised an Outing there!



HAVE YOU SIGNED ON YET

FOR  
YOUR

# SWINDON ECHO

4d.  
WEEKLY

IF NOT THEN DO SO AT YOUR LOCAL NEWSAGENT  
AND JOIN OUR GROWING TEAM OF READERS

---

For your pleasure try

## RIVERSIDE LECHLADE LTD.

Tea Room and Gardens - Boating

4 Berth and 2 Berth Cabin Cruisers for hire, also Motor Boats,  
Camping Punts, Rowing Boats, Canoes, etc. Parties catered for.

PRIVATE CAR PARK

Telephone: Lechlade 229

---

## Little & Co. Ltd.

Try us for  
Clothes for all  
the family on  
all occasions

31-32 FLEET STREET  
SWINDON

Tel.

22831

THE POPULAR MEN'S & LADIES'  
COMPLETE OUTFITTERS

---

We have a  
reputation for  
**Value & Service**  
that is second  
to none

SEE THE LOVELY SELECTION OF  
CHOCOLATES AND SWEETS

Greetings Cards a Speciality

## CECIL GREEN

CONFECTIONER AND TOBACCONIST

13 VICTORIA ROAD

Telephone 4416



## **SUPPORTERS' CLUB NOTES - continued**

At a recent match we were pleased to renew acquaintance with Jimmy Ithell, a former centre-half of the Town, who paid a visit to the County Ground. He was one of those very valuable people — “a good club man”.

Swindon, at present, have more than the average number of local players on their books. These might reasonably be expected to be “good club men” — having started their careers and made good with the Town.

All the more to be appreciated, therefore, are the seasoned professionals who have fitted in with them — players such as Jack Smith (how he appears to enjoy his football!), K. Macpherson and A. Darcy — all popular with the crowd, and all, we are confident, entitled to the title “good club men”.

An apology to conclude — in our last notes we referred to the address of our Honorary Secretary as 33 Collett Avenue. We should have said “Churchward Avenue”. We very much regret any inconvenience we may have caused through this error.

We repeat the invitation to any young supporters over the age of sixteen, who may be interested in helping in our work, to get in touch with our Honorary Secretary.

The Competition continues to flourish — the weekly profit is in the region of £350. Now we notice an official announcement by the Football League on the subject — how times have changed!

Another reminder about today's collection by the Loyal Order of Moose in aid of the fund to provide some Christmas cheer for the older residents of the Town. We know you will help — you always do so!



F. J. ROPER  
DEVIZES RD.  
SWINDON

Phone 22341

FERNDAL  
FISHERIES  
FERNDAL RD.  
SWINDON

Phone 3614

**SWINDON'S  
FINEST  
FISH and CHIPS**

**CALL ON  
YOUR  
WAY  
HOME**

F. J. ROPER  
CLIFTONIAN  
38 WILLIAM ST.  
SWINDON  
Phone 3785

**WE SHALL BE  
WAITING  
TO  
SERVE YOU**

**Menu**

**Plaice  
Hake  
Cod  
Skate**

F. J. ROPER  
HIGH ST.  
WOOTTON  
BASSETT

F. J. ROPER  
CROSS HAYES  
MALMESBURY



# SWINDON TOWN F.C.

## DEVELOPMENT FUND COMPETITION

### WINNING NUMBERS

**Week 21 — Saturday, November 17th to Friday, November 23rd**

Day	Prize	Winning No.
SATURDAY	£100	9421D
	£25	2261D
MONDAY	£20	4324D
TUESDAY	£20	10740D
WEDNESDAY	£20	6044D
THURSDAY	£20	6302D
FRIDAY	£20	6605D

## SWINDON TOWN F.C. SUPPORTERS' CLUB WEEKLY COMPETITION

### WINNING NUMBERS

**Week 13 — Monday, November 19th to Saturday, November 24th**

Day	Prize	Winning No.
MONDAY	£20	1525
	£5	1632
TUESDAY	£20	15786
	£5	13066
WEDNESDAY	£50	5935
	£10	13196
THURSDAY	£20	729
	£5	2033
FRIDAY	£20	14524
	£5	13060
SATURDAY	£100	11247
	£20	2587



This space is reserved for

**EDWIN H. BRADLEY & SONS LTD.**

**Builders - Swindon**

---

***Eric***

(E. Ayliffe)

**GENTLEMEN'S HAIRDRESSER**

**57/59 Faringdon Road, Swindon.**

**Phone 4569**

**APPOINTMENTS MAY BE BOOKED IN PRIVATE SALON**

---

**ALSTON & YOUNG LTD.**

**121-123 CRICKLADE ROAD, SWINDON.**

**Tel. 6671**

**Scooter and Three-Wheeler Specialists**

**Main Agents - LAMBRETTA - VESPA - TROJAN**

**First class after sales service**

**Open daily 9.0 a.m. to 7.30 p.m.**

---

**SUPPORT YOUR HOME**

**CIVIL DEFENCE**

**Plays a vital part in saving lives  
in PEACE or WAR**

**Particulars:**

**CIVIC OFFICES, SWINDON**

---

**WISES CATERING  
SERVICE**

**(Reg. Wise)**

**Our Caterer for the past 14 seasons  
Guarantees**

**A GOOD CUP OF TEA AT THE  
COUNTY GROUND**

**A full range of Sweets & Cigarettes  
at any of our five kiosks on your  
way in. ENJOY YOURSELF!**



# KEY OF THE BOARD

## First Section

- A—Aston Villa v. Bolton
- B—Blackburn v. Leyton Orient
- C—Blackpool v. Birmingham
- D—Ipswich v. Sheffield W.
- E—Liverpool v. Fulham
- F—Manchester C. v. Arsenal
- G—Nottingham F. v. Burnley
- H—Sheffield U. v. Manchester U.
- I—Tottenham v. Everton
- J—West Ham U. v. West Brom. A.
- K—Wolverhampton v. Leicester
- L—Bury v. Newcastle
- M—Charlton v. Middlesbrough
- N—Chelsea v. Plymouth
- O—Leeds v. Portsmouth
- P—Luton v. Grimsby
- Q—Southampton v. Norwich
- R—Sunderland v. Cardiff
- S—Brighton v. Coventry C.
- T—Bristol R. v. Bradford

## Second Section

- A—Crystal Palace v. Reading
- B—Halifax v. Watford
- C—Hull v. Port Vale
- D—Northampton v. Millwall
- E—Queen's Park R. v. Shrewsbury
- F—Aldershot v. Doncaster
- G—Barrow v. Chester
- H—Bradford C. v. Exeter
- I—Lincoln v. Brentford
- J—Oxford v. Workington
- K—Torquay v. Rochdale



# **BRETTS** PET AND GARDEN SUPPLIES

**32-33 COMMERCIAL ROAD**

and

**6 CROMWELL STREET - SWINDON**

---

When thinking of your new  
T.V. - Radio - Washing Machine - Refrigerator  
make your **GOAL**

## **HOLMES & LUCAS**

**14 REGENT STREET - SWINDON**

Stockists of all leading makes

Telephone 22526-4721

---

FOR ALL YOUR ANGLING NEEDS  
CONSULT

### **FRANK WOODWARD**

Swindon's Fishing Tackle Specialist

**25 HAVELOCK ST., SWINDON**

PHONE 3879

For Paints of Good Quality

### **H. S. HODGES & SONS**

(SWINDON) LTD.

**CRICKLADE RD. - SWINDON**

PHONE 22422

Dulux, Brolac, Friary, Valspar,  
Wallcharm, etc.

---

### **SOUTHERN LAUNDRY**

**Co. Ltd.**

Launderers and Dry Cleaners

**STATION ROAD - SWINDON**

TELEPHONE 4161

---

### **COMLEY'S**

Modern Music Centre

**26 HAVELOCK ST., SWINDON**

RECORDS - MUSIC - INSTRUMENTS

Top Twenty 'Pops' always in stock  
and wide selection of Jazz & Classics

Personal Supervision Phone 3874



# FOOTBALL COMBINATION

## Fixtures and Results to date

Date	Opponents	Ground	Result
August 18	SOUTHEND .....	(H)	3-1
21	MILLWALL .....	(A)	1-2
25	BOURNEMOUTH and B.A. ....	(A)	3-1
September 1	CHELSEA .....	(H)	0-2
3	WATFORD .....	(A)	2-2
18	QUEEN'S PARK RANGERS .....	(H)	3-2
26	SOUTHAMPTON .....	(A)	3-3
October 23	COVENTRY CITY .....	(H)	2-0
27	ALDERSHOT .....	(H)	0-0
November 7	LEYTON ORIENT .....	(A)	3-6
10	BRIGHTON .....	(H)	1-0
27	BRENTFORD .....	(H)	2-2
December 8	CHARLTON .....	(A)	
11	FULHAM .....	(H)	
19	PORTSMOUTH .....	(A)	
22	BIRMINGHAM .....	(A)	

### 1963

January 1	READING .....	(H)	
9	READING .....	(A)	
15	BOURNEMOUTH and B.A. ....	(H)	
19	SOUTHEND .....	(A)	
29	WATFORD .....	(H)	
February 4	QUEEN'S PARK RANGERS .....	(A)	
12	MILLWALL .....	(H)	
23	CHELSEA .....	(A)	
26	SOUTHAMPTON .....	(H)	
March 6	COVENTRY CITY .....	(A)	
9	ALDERSHOT .....	(A)	
19	LEYTON ORIENT .....	(H)	
23	BRIGHTON .....	(A)	
April 6	BIRMINGHAM .....	(H)	
9	BRENTFORD .....	(A)	
16	CHARLTON .....	(H)	
22	FULHAM .....	(A)	
30	PORTSMOUTH .....	(H)	



# WILTSHIRE PREMIER LEAGUE

## Fixtures and Results to date

Date	Opponents	Ground	Result
August 18	RADSTOCK .....	(H)	1-1
22	PINEHURST .....	(A)	1-4
25	STONEHOUSE .....	(A)	3-0
29	PINEHURST .....	(H)	1-0
September 1	PURTON .....	(H)	3-1
8	CALNE .....	(A)	2-0
15	DEVIZES .....	(H)	6-1
19	FROME .....	(A)	1-3
22	TROWBRIDGE .....	(H)	2-0
29	FROME .....	(H)	3-0
October 6	WARMINSTER .....	(H)	3-1
13	PEASEDOWN .....	(A)	2-1
20	CLANDOWN .....	(H)	6-0
27	PAULTON .....	(A)	1-1
November 3	WESTBURY .....	(H)	5-4
10	MELKSHAM .....	(A)	0-3
24	CHIPPENHAM .....	(H)	6-1
December 1	WOOTTON BASSETT .....	(A)	.....
8	SWINDON B.R. ....	(H)	.....
15	STONEHOUSE .....	(H)	.....
22	PURTON .....	(A)	.....
29	CALNE .....	(H)	.....

### 1963

January 5	DEVIZES .....	(A)	.....
19	WARMINSTER .....	(A)	.....
26	PEASEDOWN .....	(H)	.....
February 2	CLANDOWN .....	(A)	.....
9	PAULTON .....	(H)	.....
16	WESTBURY .....	(A)	.....
23	MELKSHAM .....	(H)	.....
March 2	CHIPPENHAM TOWN .....	(A)	.....
9	WOOTTON BASSETT .....	(H)	.....
16	SWINDON B.R. ....	(A)	.....
23	RADSTOCK .....	(A)	.....
	TROWBRIDGE (to be arranged) .....	(A)	.....



## **FORTHCOMING MATCHES**

**WEDNESDAY NEXT, DECEMBER 5th**

**F.A. YOUTH CUP — SECOND ROUND**

**SWINDON TOWN**

**v.**

**BRISTOL ROVERS**

**Kick-off 7.30 p.m.**

---

**SATURDAY NEXT, DECEMBER 8th**

**ENGLISH SCHOOLS SHIELD**

**SWINDON BOYS**

**v.**

**HAVANT BOYS**

**Kick-off 11 a.m.**

---

**TUESDAY, DECEMBER 11th**

**FOOTBALL COMBINATION**

**SWINDON TOWN**

**v.**

**FULHAM**

**Kick-off 7.30 p.m.**



**G. A. STREETLY**

**Tobacconist and Confectioner**

**10 BOURNE ROAD - MOREDON - SWINDON**

**Telephone: 4956**

---

**ADVERTISING SPACE  
IN THIS PROGRAMME  
TO LET**

Apply:-

SECRETARY,

SWINDON TOWN F.C.,

COUNTY GROUND, SWINDON



Have you purchased your ticket for the

# **DEVELOPMENT FUND COMPETITION?**

**TICKETS 1/- each**

**Draw at half-time today for**

**£100 & £25**

**other Prizes Monday to Friday**

**£20 EACH DAY**

Results published daily in -

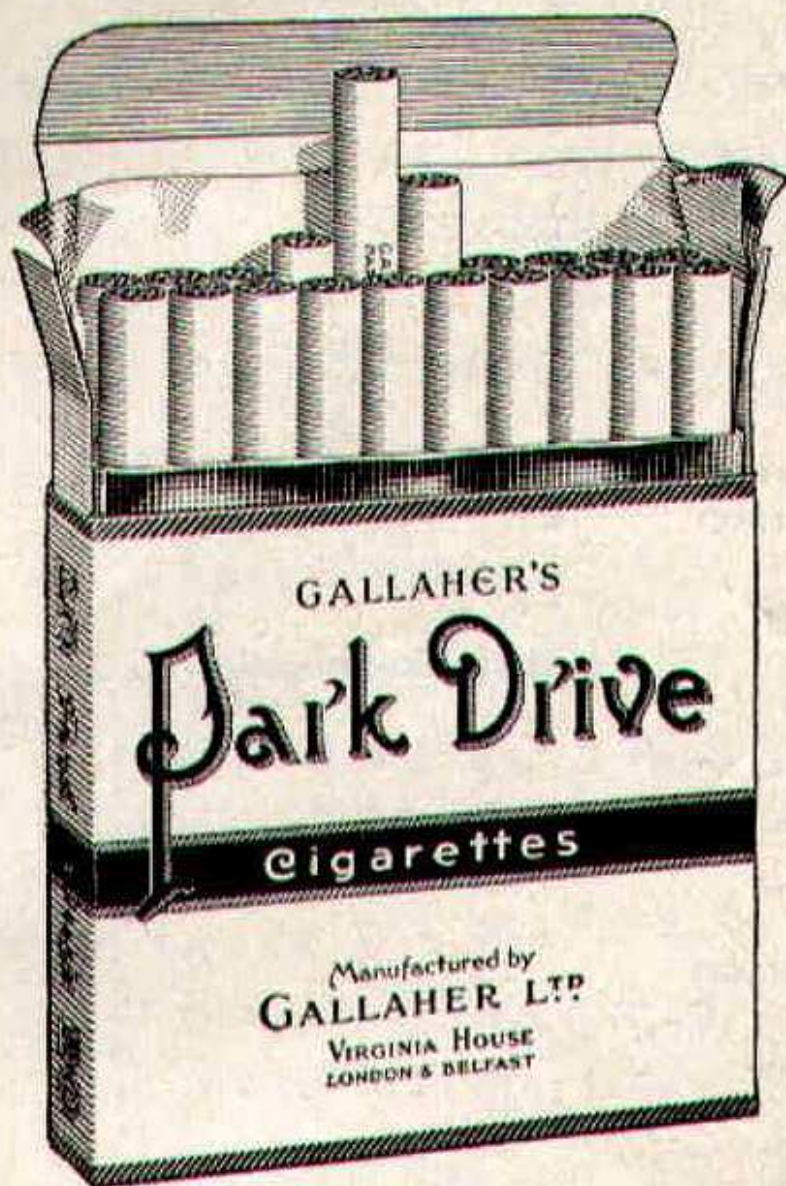
"Daily Sketch"

"Evening Advertiser" and

"Bristol Evening Post"



# PARK DRIVE



for pleasure

**PLAIN 20 for 3/5    TIPPED 20 for 2/10**



# PLAYERS APPEARANCES AND GOAL SCORERS

	Division III		F.A. Cup and League Cup	
	Appearances	Goals	Appearances	Goals
Turner	17	-	4	-
O'Hara	3	-	-	-
Wollen	20	-	4	-
Trollope	20	1	4	-
Morgan	20	-	4	-
Owen	16	-	2	-
Woodruff	20	1	4	-
Summerbee	11	1	4	-
Darcy	17	4	3	-
Hunt	19	10	4	3
Smith	20	10	4	5
Atkins	3	-	-	-
Smart	7	2	-	-
Jackson	20	11	4	2
McPherson	4	-	2	-
Stevens	1	-	-	-
Rogers	1	-	1	-

## Football Combination

O'Hara	xxxxx	xxxxx	xxxxx	7	-
Hicks	xxxxx	xxxxx	xxxxx	3	-
Turner	xxxxx	xxxxx	xxxxx	2	-
Hellin	xxxxx	xxxxx	xxxxx	11	-
Dawson		xxxxx	xxxxx	12	-
Smart	xxxxx	xxxxx	xxxxx	9	2
McPherson		xxxxx	xxxxx	7	-
Harber	xxxxx	xxxxx	xxxxx	12	-
Shergold		xxxxx	xxxxx	9	-
Darcy	xxxxx	xxxxx	xxxxx	1	-
Stevens	xxxxx	xxxxx	xxxxx	11	11
Leggett	xxxxx	xxxxx	xxxxx	9	2
Weaver	xxxxx	xxxxx	xxxxx	7	3
Rogers	xxxxx	xxxxx	xxxxx	10	1
Colsell	xxxxx	xxxxx	xxxxx	1	-
Atkins	xxxxx	xxxxx	xxxxx	5	1
Summerbee		xxxxx	xxxxx	2	1
Mellor	xxxxx	xxxxx	xxxxx	3	-
Leyton	xxxxx	xxxxx	xxxxx	1	-
Jackson	xxxxx	xxxxx	xxxxx	1	-
Huxford	xxxxx	xxxxx	xxxxx	2	-



## STAND TICKETS

Tickets for seats in the Old and New Stands may be booked in advance. Postal applications should be accompanied by a remittance and stamped addressed envelope. Tickets ordered by telephone must be collected not later than 12 noon on the day of the match, otherwise they will not be reserved.

Prices for League Matches:-

**New Stand:** Block C-6/6 (Centre)

Blocks B and D-5/6 (Side Stands)

Blocks A and E-4/6 (Wing Stands)

**Old Stand:** Centre Box-8/-

Block H-5/6 (Centre)

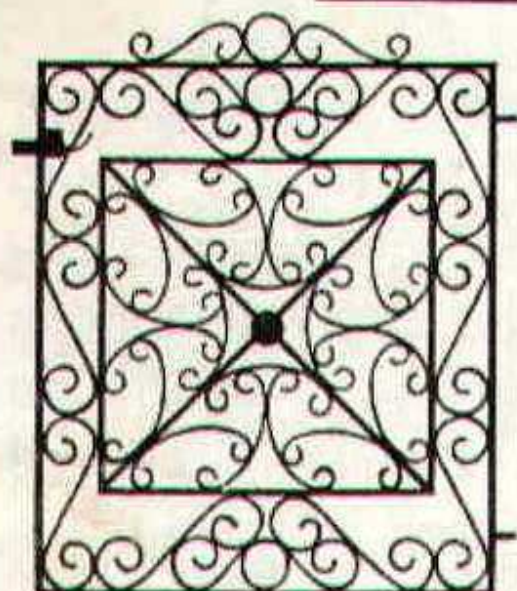
Blocks F, G and I-4/- (Side Stands)

Postal applications to: Secretary, Swindon Town F.C., County Ground, Swindon, Wilts. Telephone Swindon 22118.

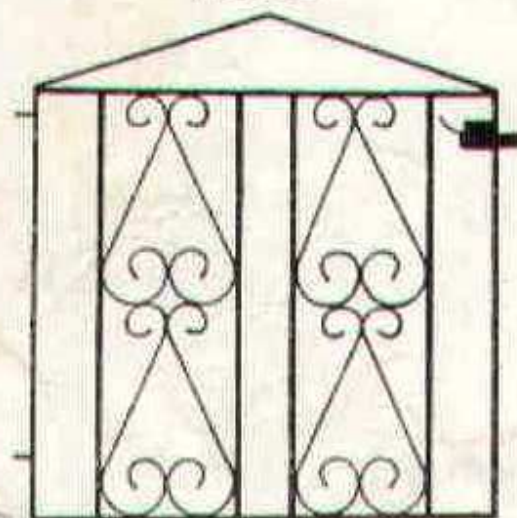




*Gatemaster*



T.G. 621



T.G. 626

**Gates from 58/-**  
Singles and Doubles

If you live in the Swindon  
area we will measure your  
Gateway for you.

---

Our Decorative Ironwork  
also includes:

FIRESCREENS  
COFFEE TABLES  
LAMPS  
BRACKETS  
CORNER TABLES  
BALUSTRADES

SEND FOR FREE CATALOGUE  
**MARTYN LYNshaw LIMITED**

20 Boundary Works, Stratton Road,  
SWINDON. TEL. 4177